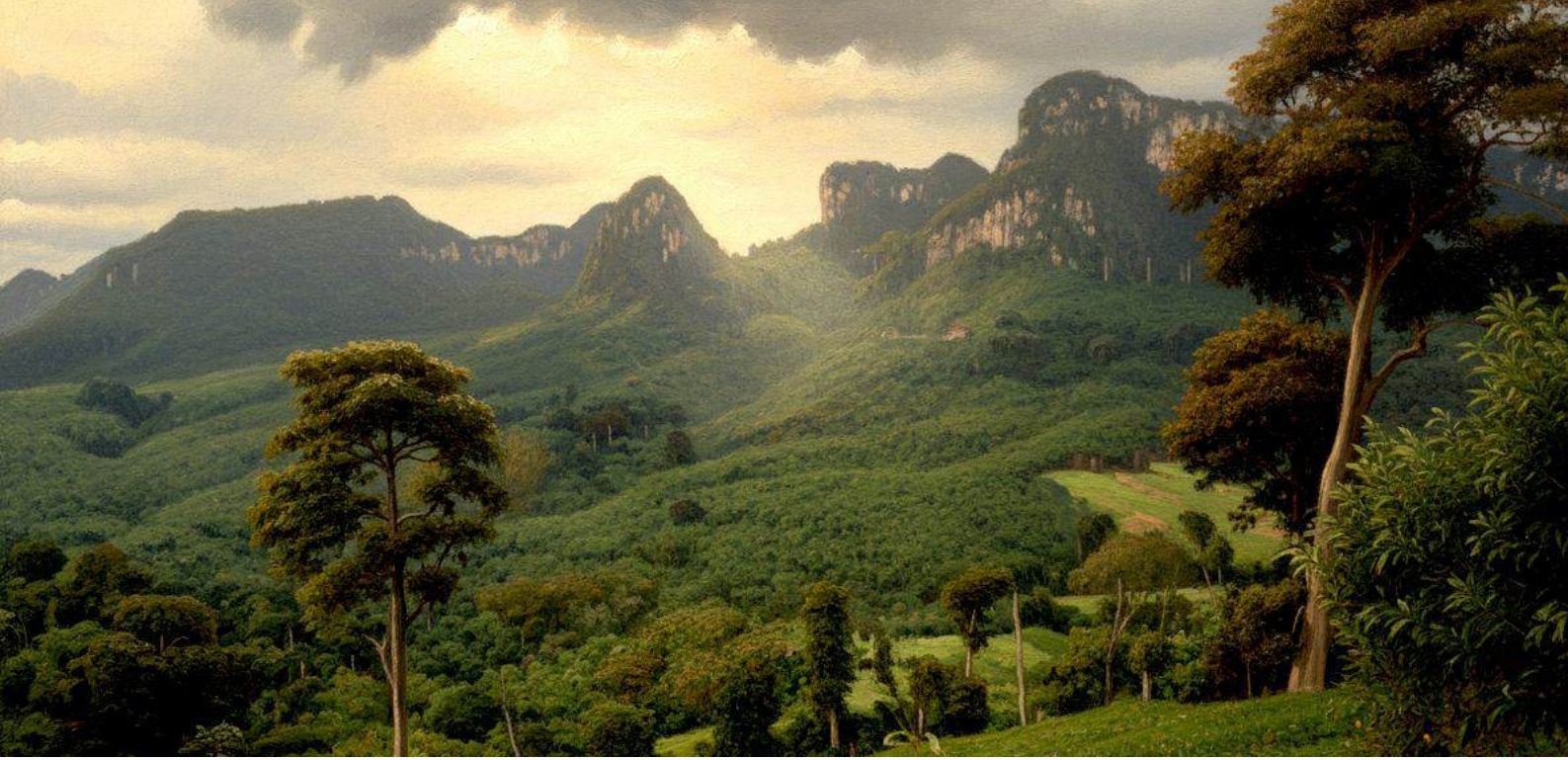


CON COOC

The hidden *Valley*



North-east of the hidden Valley

INTRODUCTION

A little Bhutan

At the heart of Phong Nha–Ke Bang National Park,
land of the last Ma Coong people.

This document is intended as an introduction to the Con Cooc Valley, revealing its landscapes, its human balance, and the layers of history that have shaped it. It outlines the valley's defining features and offers a sensitive approach to its various experiences: immersive encounters, trekking routes, high-end journeys, and potential extensions, each providing a distinct path to understanding its richness and singular character.



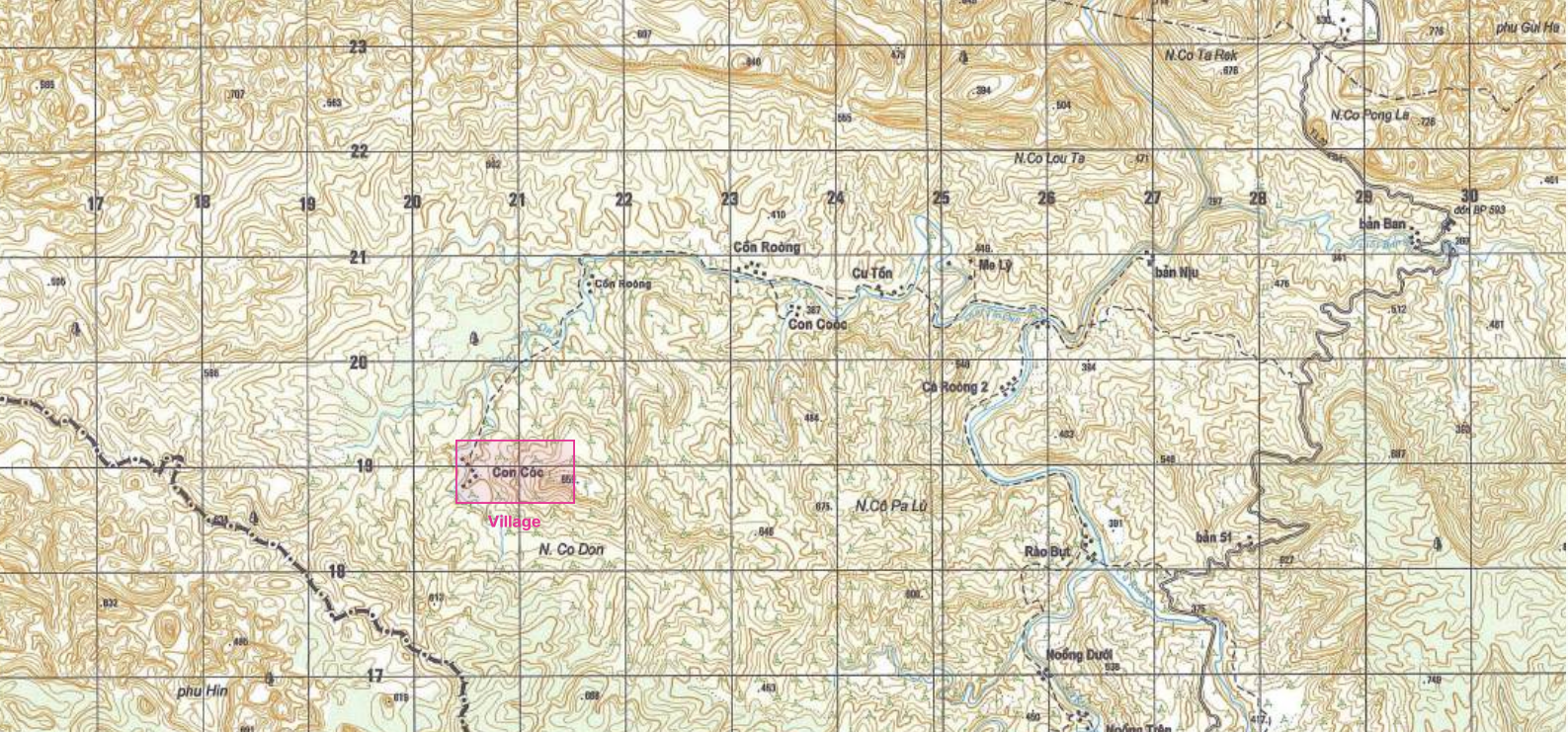
Introduction

First glimpse of the valley

THUONG TRACH DISTRICT

QUANG TRI PROVINCE





Map of the hidden Valley: to the west, the Laotian border and Hin Namno National Park ; to the north, the southern foothills of the Bac Son Plateau and Phong Nha–Ke Bang National Park

Location and natural setting

The Con CooC Valley lies in **Central Vietnam**, within **Thuong Trach District**, in Quang Tri Province, formerly part of Quang Binh. Oriented along an east-west axis, it is nourished by the Ke Thiun River and its network of tributaries, including the Ke Shar.

To the west, the valley opens toward the Laotian border and the dramatic, almost otherworldly landscapes of Hin Namno National Park.

To the north, it is bordered by the southern edge of Phong Nha–Ke Bang National Park, where a powerful line of limestone ridges dominates the horizon, punctuated by peaks such as Mount Tra Duc.

To the south, the elevations of Mount Co Don enclose the landscape, shaping a natural setting that is both secluded and majestic.





Toward a slash-and-burn field

Population



The valley is primarily inhabited by the **Ma Coong** (Mang Coong) ethnic group, a subgroup of the Bru people. The main villages include Con Cooc (ban Con Roang), ban Cu Ton, and ban Coc. The Ma Coong belongs to the **Mon-Khmer** linguistic family and speak a Katuic language.

As true indigenous inhabitants, their presence in this region dates back to time immemorial. Their culture is **patrilineal and animist**, structured around a centered and circular worldview that reflects remarkable anthropological characteristics.

The village of Con Cooc presents the strongest potential as a development base. Located in the southeastern part of the valley, it benefits from a naturally protective isolation. Established on a small elevation, it is home to sixty-two Ma Coong families. The villagers rely on upland sticky rice cultivation, cassava farming, and various legumes. The Ma Coong also serves as guardians of the forest, which they protect as a natural stronghold.



Vision and Approach

The opening of the Con Cooc Valley in 2026 is the result of exploratory missions conducted between 2022 and 2026, in cooperation with the Quang Tri People's Committee, the Quang Tri Department of Tourism, the Quang Tri Military Command & Border Army Command, as well as partners Oriental Sky Travel, Secret Indochina, and Amica JSC.

The valley holds **significant assets**: its proximity to Phong Nha and Dong Hoi Airport, the richness of its natural and human environment, and its potential to bring a new dimension to Phong Nha, one centered on human and historical experience, beyond cave exploration.

The designation “hidden Valley” is naturally paired with the subtitle “Little Bhutan.” This expression reflects both the **valley’s remote and preserved character**, the strong identity of its population, and its proximity to the Bac Son Plateau, a true lost world at the heart of the Ke Bang massif.

The term “Little Bhutan” also reflects the implementation of specific guiding principles: a contribution fee applied to each traveler, dedicated to supporting a **sustainable development project** for Con Cooc, as well as a set of simple guidelines to ensure a respectful and harmonious approach to the Ma Coong people and their environment.

The entrance to the village of Con Cooc, with the southern foothills of the Bac Son plateau and Mount Tra Duc in the background



Himalayan flower (*Sapria himalayana*, in the hidden Valley forest)



Geography and history

Ke Bang Massif and ethnic groups



Ke Bang

The Ke Bang massif extends over nearly two thousand square kilometers and stands as one of the most remarkable examples of complex karst landscapes in Southeast Asia and worldwide. It consists of an intricate network of limestone pinnacles, caves, sinkholes, and underground tunnels, forming a true natural labyrinth.

Literally, “Ke Bang” translates as “Stone Forest.” These karsts, dating back to the Paleozoic era, were shaped by powerful tectonic movements. To the west, the massif extends into Laos, connecting with the karst region of Xe Bang Phai, also known as Hin Namno.

Its highest peak, Mount Phu Co Preu (1,213 m), lies to the south, while other notable summits include Phu Co Rilata (1,128 m), Phu Xang (1,063 m), Phu Thao (1,174 m), Nui Ma Ma (715 m), Phu Phadenne (775 m), and Phu Co Cu (859 m).

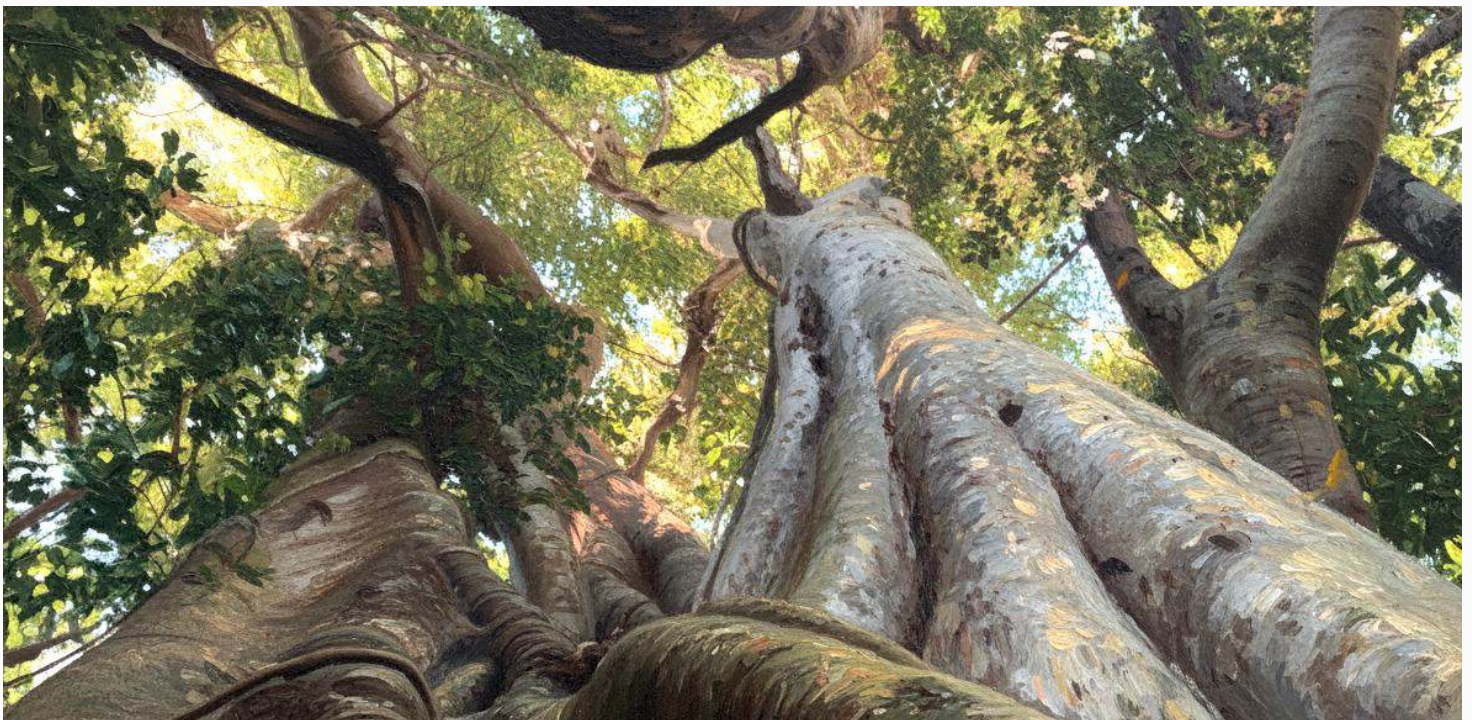
The massif is crossed by several major rivers, including the Song Chay and Song Son on the Vietnamese side, and the Nam Houei Kha Han, Xe Bang Phai, and Nam Heu on the Laotian side. These waterways are fed by numerous winding tributaries, such as the Bao Bong, Ke Thioum, and Nam Co Roong.

The extremely winding hydrographic network has shaped this spectacular system of cavities, bearing witness to the power of water runoff on the limestone rock.

“

A spectacular system of caves, underground tunnels, sinkholes, and gour pools

Sralao, Ke Bang



“

A
transboundary
site recognized
as a UNESCO
World
Heritage Site

Phong Nha – Ke Bang National Park, established in 2001, covers an area of 85,754 hectares. Since 2025, it has been merged with Laos' Hin Namno National Park, forming a transboundary site recognized as a UNESCO World Heritage Site. This union constitutes the largest karst region in Southeast Asia, and likely in the world.

The park is home to 196 plant families, 939 genera, and 2,744 vascular plant species, including 427 endemics, as well as 133 threatened species. Of the 38 endemic animal species recorded, 24 are found exclusively within the park. Out of the 224 mammal species identified in Vietnam, 154 are present in this region, **making the massif a unique sanctuary for biodiversity.**

As early as the first millennium AD, the Cham people venerated several caves located near the settlement of Phong Nha. During the colonial period, the French highlighted some of these caves, recognizing their natural and cultural significance.

In the early 2000s, under the impetus of General **Vo Nguyen Giap**, members of the British Caving Association and National Geographic explored and revealed numerous underground networks, including the spectacular Son Doong Cave. Additional developments, such as the filming of King Kong Skull Island and the creation of the Oxalis expedition company, further contributed to establishing the region's international reputation.

During the Vietnam War, the Ke Bang massif and its central Bac Son plateau were traversed by branches of the **Ho Chi Minh Trail**, turning the region into a strategic and hazardous zone.



North Vietnamese Army convoy,
Ho Chi Minh Trail, 1968





Slash-and-burn agriculture among the Bru People

The Bru

Since time immemorial, proto-Indochinese groups settled within the Ke Bang massif, across the uncertain frontier lands stretching between Khammouane in Laos and present-day Dong Hoi in Vietnam. Some lived in caves, while others established villages along waterways, **developing a close and respectful relationship with the great forest.**

These populations primarily belong to the Bru – Van Kieu group, whose sub-groups include the Khua, Ma Coong, So, and Tri. Another significant group is the Chut, comprising the Ma Lieng, May, Sach, Ruc, and Arem.

The core of the Bru territory held a strategic position, located at the crossroads of the spheres of influence of Siam and central Annam, along trade routes linking the Mekong basin to the Pacific through a series of rugged mountain passes. The isolation and semi-independence of these populations gradually diminished as they became tributary to the imperial court of Hue.

By the late 19th century, with the arrival of the French, the Bru were drawn into external affairs beyond their control, including involvement in actions against the Imperial Japanese Army. In 1954, their territory was divided by the 17th parallel, separating North and South Vietnam. From 1963 onward, their homeland became a focal point of some of the **most intense fighting and bombardments** of the Vietnam War, particularly in the area surrounding Khe Sanh.





Basket of cassava ready to be cooked

Con Cooc Ma Coong

The life of the Ma Coong of Con Cooc revolves around **shifting cultivation and the forest**, regarded as a sacred dwelling of spirits and an inexhaustible source of life. Forest excursions, which vary with the seasons, serve essential purposes: gathering wood, medicinal plants, berries, shoots, bark, and roots, as well as hunting. In the past, this included a wide range of creatures, from lizards and cobras to pythons and vipers, as well as water and forest turtles and monitor lizards, not to mention the great mammals of earlier times, elephants, tigers, gaurs, and rhinoceroses.

Forest foraging also extends to mollusks, crustaceans, insects, and amphibians: river and land snails, freshwater shellfish, worms, shrimp and crabs, scorpions and arachnids, dragonflies, grasshoppers, crickets, cicadas, beetles, flies, rhinoceros beetles, ants, toads, frogs, salamanders, and tadpoles. This life lived in **rhythm with nature sustains ancient knowledge systems** and fosters a deep connection with the surrounding ecosystem.

At the same time, the Ma Coong nurture a **strong tradition of music and dance, using drums and gongs** to accompany sung narratives, ritual ceremonies, and weddings. These practices are vibrant expressions of their culture, weaving together the history of each village and transmitting the enduring spirit of this ancient people

Ma Coong of Con Cooc and local chili-based recipe



Ma Coong woman from Con Cooc with jar,
Paradise Camp



The modules

Immersion, hikes and encounters with the Ma Coong people

THUONG TRACH DISTRICT

QUANG TRI PROVINCE





1 — *Ma Coong Immersion*

Departure from Phong Nha or Dong Hoi, followed by a 1.5-hour drive along the QL15, the former Ho Chi Minh Trail. Enter the Phong Nha – Ke Bang National Park, passing karst hills draped in dense forest. Turn onto the DT 562 with a stop at a temple dedicated to Vietnamese soldiers entombed in the area, followed by a visit to another temple honoring nurses. The provincial road then winds along the Ke Thiun River valley toward the Laotian border, arriving at Ban Karai, a village inhabited by the Ma Coong.

Here, local guides welcome visitors before beginning a 2 km walk along a paved path leading to Con Cooc, passing fields, traditional slash-and-burn plots, and the rich surrounding nature.

Upon arrival in Con Cooc, guests are welcomed with tea at the village chief's home, where the local characteristics and traditions are presented. Depending on the season, participants can immerse themselves in the daily life of the Ma Coong, taking part in basket weaving, textile work, and the making of backpacks and fishing nets.

A pastoral lunch is served before returning to Phong Nha.

2 — *Seasonal work in a nearby slash-and-burn plot*

A one-hour walk brings visitors to a Ma Coong slash-and-burn plot.

Guides explain the stages of its preparation: sowing, maintenance, harvesting, and the rituals and offerings made to associated spirits, including the Paddy Lady, a deity revered by many proto-Indochinese groups. Participants assist in tasks such as clearing weeds between young rice shoots, maintaining the edges of the plot, and reinforcing barriers to protect crops from wild boars and other nocturnal animals. This experience offers insight into the centuries-old principle of forest foraging and the ancestral balance between humans and nature.

In the late afternoon, participants return to Phong Nha.





1 — *Discovering the Nature of the hidden Valley*

Hike: 2.7 km – 250 m ascent / 200 m descent – approx. 3-4 hours.

Departure from Phong Nha or Dong Hoi, with transfer to Con Cooc. The hike begins along an ascending sandstone path, leading to the northwestern slope of Mount Co Don. The trail passes through former slash-and-burn fields and cassava plantations, offering stunning viewpoints: the mountains along the Laotian border, Hin Namno National Park, Mount Tra Duc (765 m) to the northeast, and the southern foothills of the Bac Son Plateau to the north.

After about 1 km on a paved path, the trail descends toward the middle Ke Shar valley. A narrow path winds through towering tropical trees and bamboo thickets, arriving at the river with its sandstone-strewn bed, flanked by majestic figs and sralao trees.

Hiking continues along the Ke Shar, either by following the riverbed or, during the Green Season, along a trail running beside the riverbank.

Arrival at Paradise Camp for a riverside lunch. The trek then continues along the river, ascending onto the opposing slopes and passing the sites of former Ma Coong villages, all under the watchful view of the southern face of the Bac Son Plateau and the pyramid-like silhouette of Mount Tra Duc.

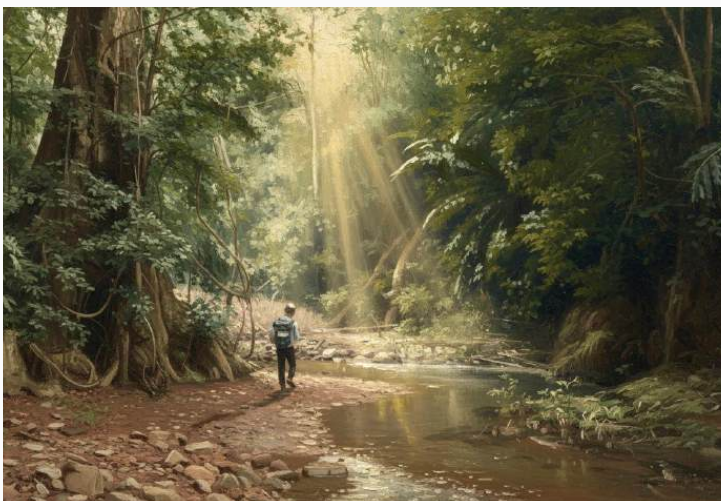
The hike concludes at the paved path for the return journey to Phong Nha.

● *For a shorter version, the hike can start directly from the paved path.*

●

●

●



1 — Discover the Wonders of Paradise Camp

Level 1

Day 1 - Phong Nha – Paradise Camp

Hike: 2.7 km – 250 m ascent / 200 m descent – approx. 3-4 hours

Departure from Phong Nha or Dong Hoi, with transfer to Con Cooc. The hike begins along a sandstone path leading to the northwestern slope of Mount Co Don. The trail passes through old slash-and-burn fields and cassava plantations, offering breathtaking panoramas: the mountains along the Laotian border, Hin Namno National Park, Mount Tra Duc (765 m) to the northeast, and the southern foothills of the Bac Son Plateau to the north.

After about 1 km on a paved path, the descent continues toward the middle Ke Shar valley. A winding trail meanders through towering tropical trees and bamboo groves until reaching the sandstone riverbed of the Ke Shar, bordered by centuries-old figs and sralao trees. Hikers follow the river, or, during the Green Season, a trail along its bank, arriving at Paradise Camp. The late afternoon is free to explore the camp.

Evening: barbecue and campfire. Optional tasting of traditional jar beverages accompanied by Ma Coong music and chants.

Overnight in Paradise Camp.

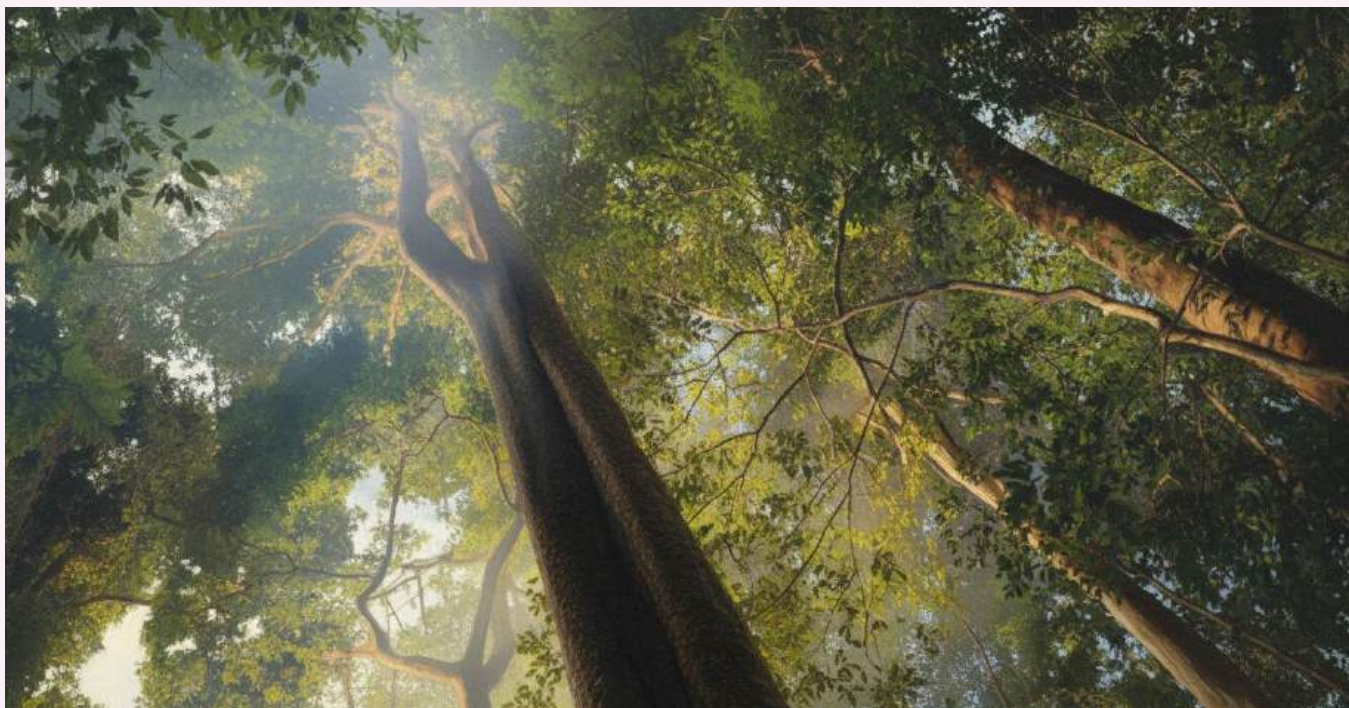


Ke Shar, not far from Paradise Camp



About Paradise Camp

Nestled along the middle Ke Shar, this forest camp sits beside a wild river, surrounded by ancient trees, including sralaos (*Lagerstroemia calyculata*) with their striking white-spotted trunks, and kapok trees (*Ceiba pentandra*), reminiscent of the forested parklands of Angkor. The camp offers a full immersion in primeval forest and in the rich culture of the Ma Coong people.



Sralao from Paradise Camp

Jour 2 - Paradise Camp – Phong Nha

Hike along the Ke Shar, then ascend along opposing slopes, passing the sites of former Ma Coong villages. The route is dominated to the north by the imposing southern face of the Bac Son Plateau and the pyramid-shaped Mount Tra Duc. The hike concludes at the paved path for the return journey to Phong Nha.



2 — *Extended Immersion in the hidden Valley*

Level 2+

Day 1 - Phong Nha – Paradise Camp

Hike : 5 km – +450 m ascent / -370 m descent – approx. 5-6 hours.

Departure at 5:30 AM from Phong Nha or Dong Hoi, heading to the end of the paved path near the Laotian border. The hike begins with an ascent through majestic bamboo groves, followed by an old forest where large trees and ferns alternate. You then enter a wild, isolated, and unexplored area stretching toward Hin Namno National Park in Laos, evoking a “world’s end” atmosphere.

The slow progression continues along a ridge, itself part of the southwestern spur of Mount Tra Duc. To the north, spectacular views unfold: the southern face of the Bac Son Plateau, karst cliffs and escarpments, and the major Ca Roong tectonic fault forming a natural boundary, protecting a lost and unexplored world beyond.



Leucocasia, discovering the splendors of the forest



The descent leads through lush valleys to the confluence of the Shi and Ke Shar rivers. Depending on the season, hikers follow the Ke Shar riverbed, scattered with red sandstone pebbles, or walk along its banks lined with ferns, cyclopean trees, bamboo hedges, palms, and wild banana plants. Trails are sometimes animated by colorful butterflies or dotted with mountain frog-filled pools. The hike along the river's meandering course lasts about one hour, arriving at Paradise Camp.



In lush green valleys

The camp lies on the south bank of the Ke Shar and extends into an exceptional forest where figs, spiral vines, dipterocarps, and sralaos intertwine—the latter with smooth, white trunks often adorned with epiphytes.

Evening: barbecue and campfire, with optional traditional Ma Coong music and chants.

Overnight: Paradise Camp



Day 2 - Paradise Camp – Phong Nha

Hike: 1.5 km – +50 m ascent – approx. 1 hour.

Hike along the Ke Shar, then ascend along opposing slopes, passing the sites of former Ma Coong villages. The route is dominated to the north by the imposing southern face of the Bac Son Plateau and the pyramid-shaped Mount Tra Duc. The hike concludes at the paved path, where vehicles transport participants back to Phong Nha.

Progress through the forest



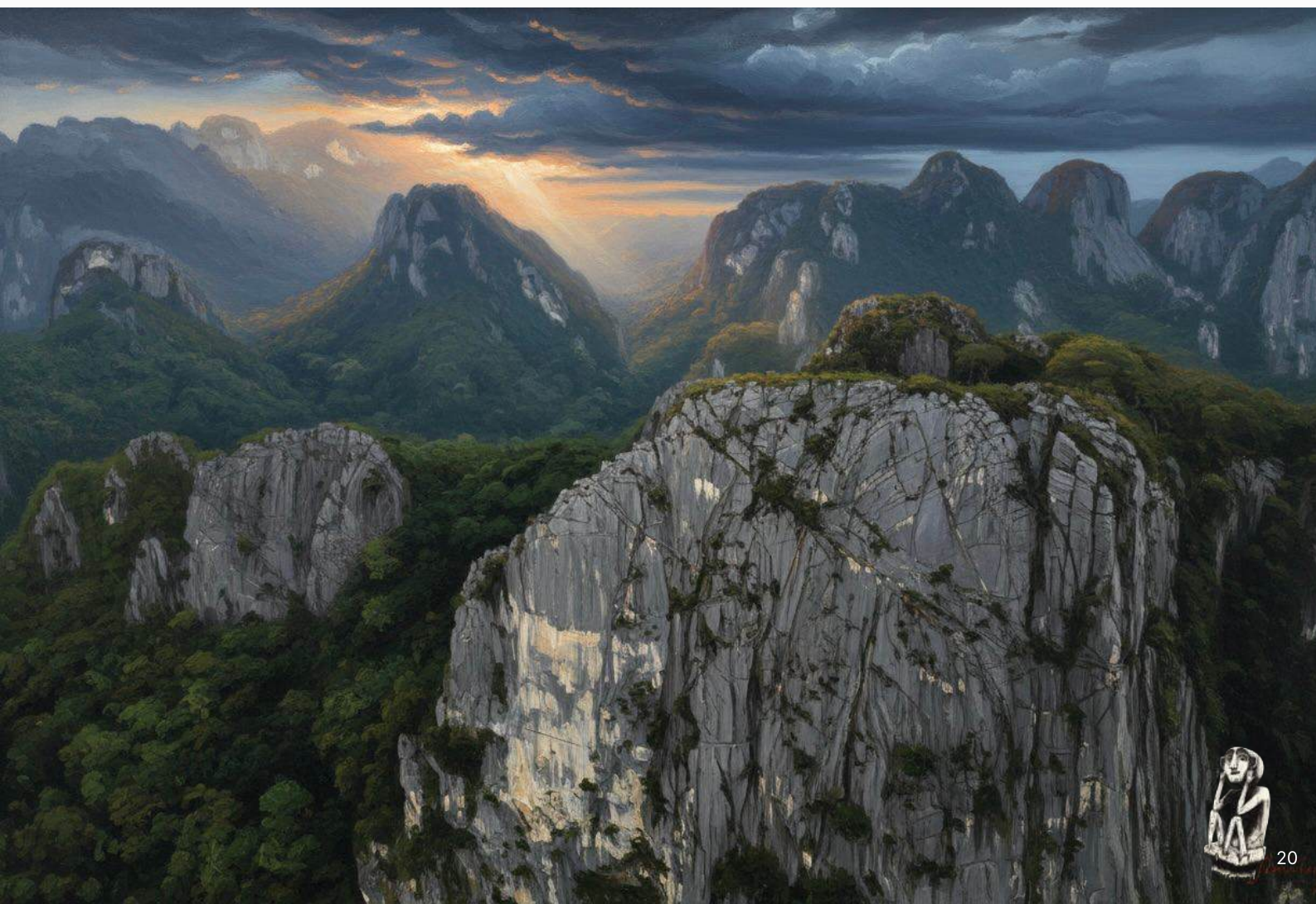
3 — *Advanced Trekking*

Level 3

This one-day module is designed for **experienced participants**, progressing along the southern foothills of the Bac Son Plateau. The itinerary requires endurance and preparation, offering karstic mountains, primary forests, and an unmatched immersive forest experience.

About Bac Son

North of the fault line and cliffs, the hyper center of the Ke Bang massif unfolds around the rugged Bac Son Plateau, an uninhabited, unexplored area that becomes nearly arid during the dry season. The karsts here intertwine, forming almost impenetrable labyrinths in places: a dense tangle of ridges, cirques, peaks, sinkholes, dolines, and ravines. Bac Son is covered with sub-montane evergreen forests, where epiphytic flora thrives, nourished by oceanic winds that provide the perfect humidity for diverse ecosystems. This stronghold serves as an inaccessible sanctuary, home to an extraordinary wildlife: big cats, tigers, bears, Ha Tinh langurs, doucs, white-cheeked gibbons, dhole (Asian wild dogs), saola, muntjacs, Annamite striped rabbits, and Laotian rock rats.



4 - Camp Paradis high-end

Jour 1 - Phong Nha – Paradise Camp

Departure from Phong Nha or Dong Hoi – approximately 2 hours by road to Con Cooc. Upon arrival in Con Cooc, guests are welcomed with tea at the village chief's home. Local characteristics are presented, and depending on the season, participants can immerse themselves in the daily life of the Ma Coong: engaging in basketry, weaving, or the making of baskets and nets, or participating in traditional slash-and-burn practices.

After this initial experience, a short 10-minute transfer along the military cement road leads to a 30-minute walk on a forest trail descending toward the middle Ke Shar basin, arriving at Camp Paradis. Guests settle into African-style tents and enjoy free time. Around 5–6 PM, a barbecue dinner is served.



Day 2 - Paradise Camp

In the morning, a 3-hour hike follows the Ke Shar, including a 1.5-hour ascent along the riverbed, followed by a descent along a riverside trail. Lunch is served at Camp Paradis. The afternoon is free for relaxation or optional activities.



In the evening, around 5–6 PM, another barbecue is offered, followed by traditional Ma Coong songs and the tasting of a jar of local rice wine.

Day 3 - Paradise Camp – Phong Nha

The hike continues along the Ke Shar, ascending the slopes where former Ma Coong villages once stood, with views dominated to the north by the imposing southern face of the Bac Son Plateau and the pyramid-shaped Mount Tra Duc. Upon reaching the cement road, participants are transferred back to vehicles for the return to Phong Nha.



Traditional Ma Coong songs



Extensions

Phong Nha, Xe Bang Phai, Central
Vietnam, Phu Yen & Northern Vietnam





Son Doong Cave

Phong Nha

This extensive network of **underground rivers, caves, and caverns** carved into ancient limestone can be explored through a range of one-day or multi-day tours, depending on the desired level of commitment. These carefully supervised experiences take place in the heart of Phong Nha-Ke Bang National Park, within a system of more than 400 documented caves, many of them vast in scale and some hosting their own ecosystems. Notable sites include the Tu Lan, Hang Tien, and Hang Ban cave systems, as well as Son Doong Cave—the world’s largest cave—featuring stalagmites that can rival the height of London’s Big Ben.

Depending on the selected itinerary, activities may include trekking across fields, rivers, and jungle-covered karst peaks; navigating seemingly endless galleries; and rappelling or swimming through underground rivers, with or

without an overnight stay in a subterranean bivouac inhabited by swallows and bats.

Beyond caving, the region also offers opportunities for kayaking along rivers bordered by karst formations and waterfalls, as well as cycling and hiking through the surrounding countryside. These routes may lead to encounters with local residents, including veterans involved in the construction of Route 20—a branch of the **Ho Chi Minh Trail**—a strategic logistics corridor during the Vietnam War connecting to Laos. This historical context provides insight into a period when caves were used as shelters and storage sites for supplies and equipment.





Xe Bang Phai Cave

Xe Bang Phai

Tham Xe Bang Phai (Se Bangfai) Cave is located in Hin Namno National Park, Khammouane Province. It is a **natural wonder**, formed by the river of the same name. From Phong Nha, it can be reached via the famous Mu Gia Pass and 194 km of spectacular road crossing the Annamite Mountains.

The Xe Bang Phai (“Rocket River”) is one of the main tributaries of the Mekong. It originates in the Annamite Range near the 17th parallel, then winds northwest through various formations before encountering a transverse stratified limestone massif (Phu Pa Koue Ki Thame), which it crosses underground. It then flows generally east-southeast before reaching the Mekong plain after 330 km of majestic meanders.

The Xe Bang Phai was navigated upstream in August 1904 by the steamship Lagrandière, part of the Laotian flotilla, for a distance of 250 km up to the cave’s exit, which was then the terminus for steam navigation during high water. The first cave passage was completed in 1904 by Macey’s team on a bamboo raft. The cave inspired fear among local villagers, who believed its depths were inhabited by a phi (spirit).

In 1995, despite the dangers posed by numerous UXOs, B. Collignon and C. Lagarde conducted extensive studies there. The cave was then closed to foreigners for nearly a decade before being re-explored in 2008 by the National Geographic.





Painted portrait of a Vietnamese emperor in golden imperial attire

Central Vietnam

In the heart of central Vietnam, nestled between the sea and the Annamite Mountains, lies a region where **history, culture, and nature are closely intertwined**. **Hue**, the seat of the Nguyen Dynasty emperors from 1802 to 1945, reflects the country's cultural heritage. Listed as a UNESCO World Heritage Site, this former imperial capital is set along the tranquil Perfume River and dotted with royal temples and tombs that bear witness to its historical legacy. Known for its refined character, the city is also distinguished by a culinary tradition rooted in imperial cuisine, considered among the most sophisticated in Vietnam.

Further south, **Hoi An**—formerly known as Faifo (Phai-phô)—lies in the Thu Bon Delta, formed by the confluence of the Vu Gia and Thu Bon Rivers before they flow into the East Sea.

Shaped by centuries of trade, this former port of the Champa Kingdom, later integrated into Dai Viet in the 15th century, retains influences from Chinese, Japanese, and European merchants who once frequented its shores along the maritime Silk Roads. Today, its well-preserved historic center, largely pedestrian, is often described as an open-air museum and is recognized as a UNESCO World Heritage Site.

Between the two, **Bach Ma National Park** offers a marked natural contrast between coast and mountains, at the meeting point of different biogeographic zones. Dense tropical forests blend with high-altitude subtropical vegetation, creating a rich biodiversity area. Once developed as a French hill station in the 1930s, its cooler summit still preserves remnants of that period, when it was sometimes referred to as the “Dalat of central Vietnam.”





Phu Yen coastline

Phu Yen

Sometimes called the Palm Coast, the Phu Yen coastline (Dac Lac since the 2025 administrative reorganization) is one of the most **picturesque** in south-central Vietnam, yet it is the least known. The Palm Coast is located 620 km south of Phong Nha.

It is distinguished by its narrow peneplains, its rustling rice fields, its old villages, golden dunes, pandanus, dragon tree, and agave groves, numerous bays, lagoons, meandering rivers, oceanic promontories, rocky islands, endemic birds, Bryde's whales, and its human and historical heritage. It corresponds to the central and southern part of the **ancient Cham kingdom** of Vijaya.

Untouched by tourism and industry, the coastline has retained its relatively **unspoiled character**. Its protective isolation gives its ocean spaces a sense of eternity: coastal hikes through dunes and islands, along ancient stone paths, and encounters with fishermen paint a picture of slow tourism and an authentic seaside experience rooted in local traditions.





Center of Thong Nhong range. Cao Bang province

North Vietnam

Northern Vietnam is divided into three subregions: the Northeast, the Northwest, and the Delta, where the capital, Hanoi, is located. The region is shaped by two major rivers—the Red River and the Black River—along with a network of secondary waterways, and a coastline dotted with limestone islands, including the notable Ha Long Bay.

It encompasses the Red River Delta, fertile valleys, and a series of mountain ranges with varied geomorphology (granitic, limestone, and coastal), extending from the Hoang Lien Son—often referred to as the Tonkin Alps—to the northeastern massifs such as Tay Con Linh, Can Ty, Thong Nong, Mo Xat, and Pa Co–Hang Kia. These areas are interspersed with mountain nature reserves and UNESCO Global Geoparks, including Non Nuoc Cao Bang Geopark and Dong Van Karst Plateau Geopark.

Formerly known by various names, including **Tonkin**, this region corresponds to the historic heart of the Dai Viet (Great Land of the Viets), later referred to as Dai Nam (“Great Land of the South”), a designation used to assert independence from China.

It is also characterized by a high level of **ethnic diversity**, with communities such as the Hmong, Tay, Thai, Dao, Nung, Lolo, Muong, Sanchi, Lu, Phu La, Ha Nhi, Sila, and Pha Ten, among others. The region has also been the site of major conflicts, including the Battle of Dien Bien Phu and the Sino-Vietnamese War of 1979.



Thank you for reading

